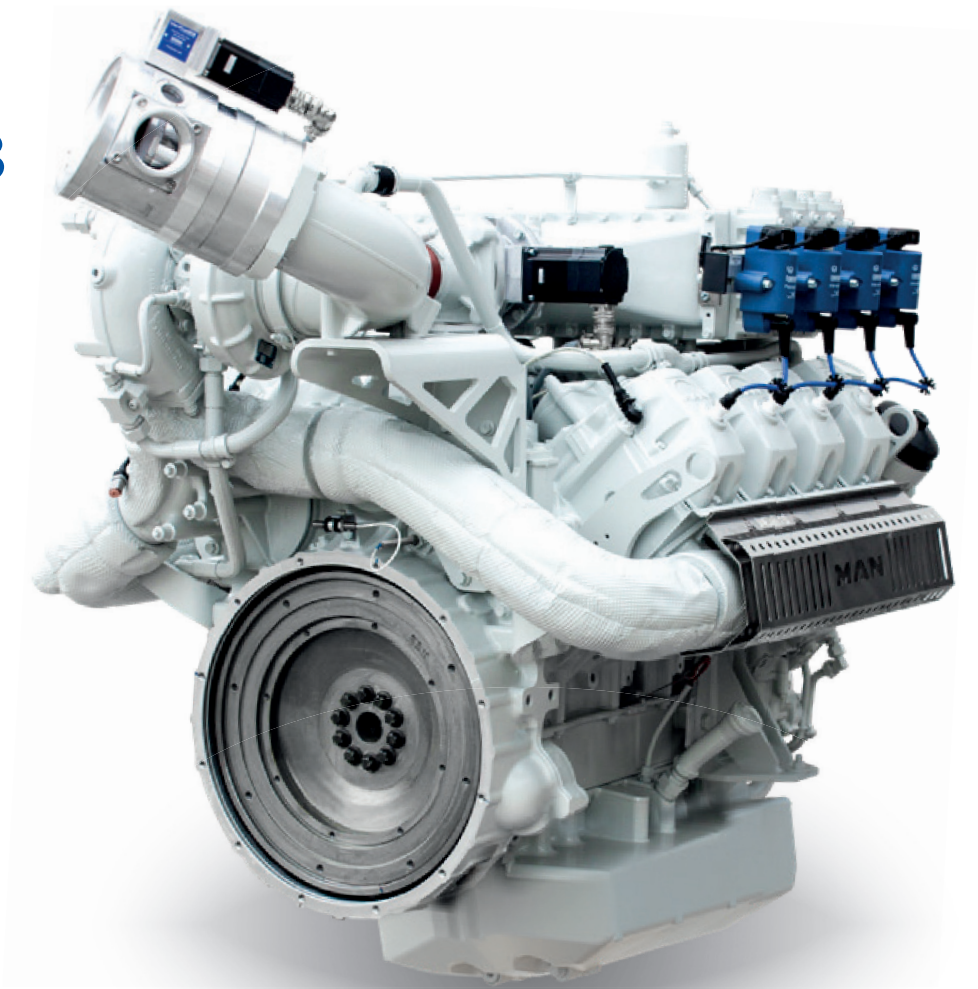


■ MAN Gas Engines for Power Generation

E3268



Characteristics

- Cylinders and arrangement: 8 cylinders in 90° V arrangement
- Mode of operation: four-stroke spark-ignition gas engine
- Turbocharging: turbo charger with water-cooled turbine housing and pressure-oil lubricated bearings
- Engine cooling: water-cooled
- Air-fuel mixture cooling: two-stage cooler

MOTORTECH Equipment – Standard Scope of Supply

- Ignition system with MIC3+ ignition controller and LiteRail wiring rail
- MHP spark plug B4321
- Detonation control system with DetCon2
- Speed control system with ITB throttle body, VariStep3 stepper motor driver and SC100 speed controller
- Sensor harness
- VariFuel2 air/gas mixer including flow body, inlet and outlet flanges, stepper motor harness and VariStep3 stepper motor driver

E3268 – COP with Natural Gas/Special Gas

Technical Features

| Mode of Operation | | COP with Natural Gas | | COP with Special Gas | |
|-------------------|----------|----------------------|-----------|----------------------|-----------|
| At engine speed | rpm (Hz) | 1500 (50) | 1800 (60) | 1500 (50) | 1800 (60) |

| Engine version | | LE 212 | LE 212 ⁴⁾ | LE 222 ⁴⁾ | LE 222 | LE 232 ⁴⁾ | LE 222 ⁴⁾ |
|--|--------------------|---------------------------------|---------------------------------|----------------------|--------|----------------------|----------------------|
| Bore | mm | 132 | 132 | 132 | 132 | 132 | 132 |
| Stroke | mm | 157 | 157 | 157 | 157 | 157 | 157 |
| Displacement | l | 17.2 | 17.2 | 17.2 | 17.2 | 17.2 | 17.2 |
| ISO standard power ⁵⁾ | kW | 370 | 390 | 370 | 370 | 370 | 390 |
| Air-fuel ratio | λ | 1.69 | 1.69 | 1.49 | 1.52 | 1.46 | 1.51 |
| Coolant heat ¹⁾ | kW | 225 | 229 | 239 | 214 | 229 | 223 |
| Exhaust heat based on 120 °C ¹⁾ | kW | 201 | 233 | 224 | 198 | 223 | 235 |
| Efficiency ¹⁾ | | | | | | | |
| ■ mechanical ⁵⁾ | % | 42.6 | 40.0 | 39.7 | 42.1 | 40.1 | 40.8 |
| ■ thermal | % | 47.2 | 47.7 | 49.5 | 46.9 | 48.9 | 47.9 |
| ■ total | % | 89.9 | 87.7 | 89.2 | 89.0 | 89.0 | 88.7 |
| Emissions status NO _x ²⁾ | mg/Nm ³ | < 500 < 100 ^{4) 6)} | < 500 < 100 ^{4) 6)} | < 250 | < 500 | < 500 | < 500 |
| Combustion ³⁾ | | m | m | m | m | m | m |

1) at 100 % load 2) with 5 % exhaust-gas oxygen 3) m = lean, st = stoichiometric 4) data conditional and on request
5) in accordance with German Industrial Standard DIN ISO 3046, Part 1 6) emission status available on request, including SCR technology

Technical data is based on a calorific fuel value of 10 kWh/Nm³ for natural gas and 6 kWh/Nm³ for special gas.
The values are provided for information purposes only and are non-binding.



Dimensions

| Engine Version | | LE 212 | LE222 | LE224 | LE 232 |
|------------------|----|--------|-------|-------|--------|
| A Overall length | mm | 1620 | 1620 | 1620 | 1620 |
| B Overall width | mm | 1210 | 1210 | 1210 | 1210 |
| C Overall height | mm | 1422 | 1422 | 1422 | 1422 |
| Dry weight | kg | 1497 | 1497 | 1497 | 1497 |

All data are reference values. Please request installation drawings for detailed specifications.